

www.fairfieldservice.com

FAIRFIELD SERVICE COMPANY

Providing excellence in Service, Product, and Value in our efforts to support the Water, Wastewater, and Material Conveyance industries since 1978.

THE MACH

CHAIN OPERATED BAR SCREEN



Reliable and economical solid separation with well-known technology

- ▶ More efficient screenings captures
- ▶ Larger debris removal with less hassle
- ▶ Made of stainless steel
- ▶ Reliable operation with low maintenance

Water & Wastewater Treatment Equipment



www.fairfieldservice.com

The "MACH" bar screen is a package of mechanical chain operated bar screen previously which is known as CHFF, CHFB & CHFFM. For over last two decades, The "MACH" which is front raked, front/back return bar screen, is the standard for the industry with proven reliability. The "MACH" provides protection for the processing equipments by removing oversize debris from the sewage.

Chain operated cleaning rakes intermesh with the bar rack, and elevate collected debris to a discharge point where each rake is wiped off before descending on the return side of the unit.

Fairfield provides mainly three models under The "MACH".

► **MACH-01 CHFF - Chain Operated Front clean Front return**

MACH-01 is mainly applicable where front cleaning system is required and inclination angle with respect to vertical is 6 to 15 degree.

► **MACH-02 CHFB - Chain Operated Front clean Back return**

MACH-02 is mainly applicable where back cleaning system is required and inclination angle with respect to vertical is 6 to 30 degree.

► **MACH-03 CHFFM**

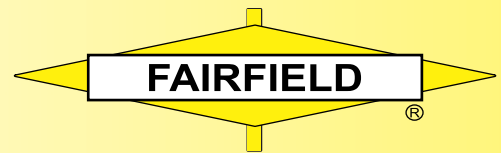
MACH-03 is mainly applicable where we want to go for the fine screening, gap between bars up to 4 mm, with less capital cost.

The basic difference between these three screens is the path; the cleaning rakes descend and ascend.

The "MACH" consist of

- | | |
|------------------|-------------------------------|
| ► Bar Rack | ► Rake Wiper Assembly |
| ► Rake Assembly | ► Foot Shaft Assembly |
| ► Dead Plate | ► Control Panel & Local Panel |
| ► Drive assembly | |





www.fairfieldservice.com

► Involuntary Squeeze Protection

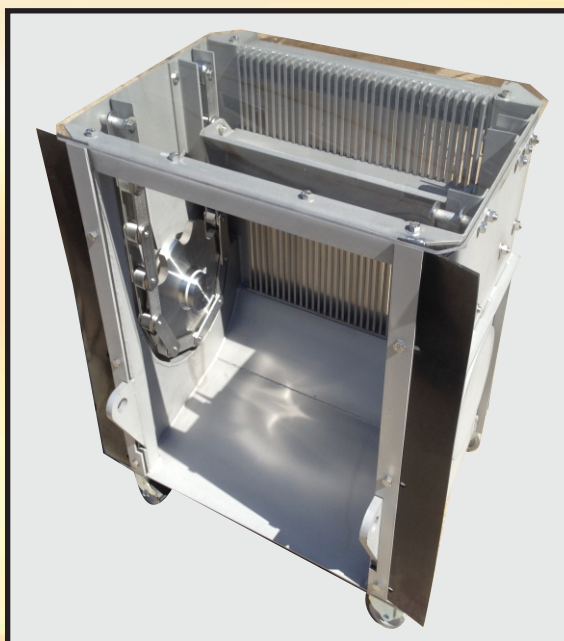
The main eye-catching feature of Fairfield MACH-03 bar screen is involuntary squeeze protection. This feature enables automatically clear obstruction. Sensor provided in equipments senses the obstruction and change the rake direction. This direction changes either successfully dislodged the obstruction or repeat the process in forward direction. Cycle will repeat for a fix number of time and afterward machine will automatically shut off.

► Benefits

- Sturdy stainless steel design
- Driving mechanism above water
- Low head loss
- High flow rates
- Reliable operation
- Low maintenance

► Technical Data

- Standard channel width from 1 ½' to 6'.
- 6 to 45 degree inclination from the vertical.
- Standard Bar Spacing are 4 mm to 75 mm.
- Other sizes available upon request
- Five years limited warranty



Foot Shaft assembly

► Applications

- Municipal and industrial wastewater treatment plants
- Pump stations
- Surface water intake structures
- Combined sewer overflows





www.fairfieldservice.com

► A few examples from
our installations



Fabricated MACH Bar screen for
Allegheny County, PA



Control Panel for MACH Bar screen



MACH Bar screen Installed at
Miami-Dade WWTP, FL

FAIRFIELD SERVICE COMPANY IS MBE CERTIFIED.

Plant

1401 Kentucky St.
Michigan City, IN 46360
Phone: 219-872-3000
Fax: 219-872-4327

www.fairfieldservice.com

**Sales Office
Engineering, Design & Development**

3007 Harding Highway East,
Box 2 North, Marion, OH 43302-8532
Phone: 740-387-3335
Fax : 740-387-4685

Water & Wastewater Treatment Equipment