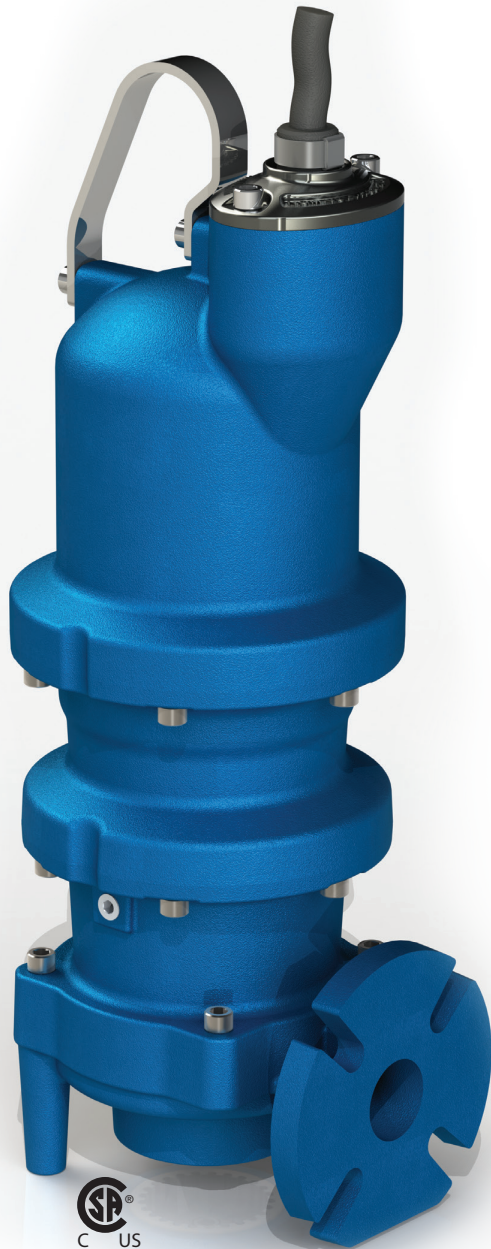


The Next Generation of Grinder



Explosion proof grinder pump series designed to handle wastewater applications requiring high capacity, high head, and high flow

BLADE

BY BARNES[®]

TECHNICAL DATA

- Heads to: 240'
- Flows to: 150 gpm
- Discharge size: 2", 2.5", 3"
- Horsepower: 3, 5, 7.5, 10, 15
- RPM: 3450

APPLICATIONS

- Municipal
- Commercial
- Institutional
- Light Industrial

ADVANCED
CUTTER
TECHNOLOGY

EXPLOSION
PROOF
DESIGN

LONG
LASTING
DEPENDABILITY

BARNES® X-PROOF GRINDER PUMPS

1. Plug-n-play cord simplifies pump installation with its quick disconnect capability
2. Oil-Filled Motor for optimal motor cooling and maximum bearing life
3. Stainless steel hardware provides resistance against corrosion to extend pump life
4. Moisture detection probe alerts pending seal issues before water can enter the motor
5. Vortex impeller design greatly reduces clogging issues due to troublesome objects
6. Exclusive Slicerator™ slices with the full torque of the motor acting on a small area to provide the ultimate solution in solids reduction
7. Available in vertical or horizontal discharge (18 Frame only) for simple installation and replacement
8. Double mechanical seals provide maximum motor protection
9. Heavy duty, oil-lubricated bearings extend pump life
10. Large lifting Bail allows for easy installation
11. Explosion proof design gives an added piece of mind for pump operation and safety; Class I Group C & D Division 1 motors as standard with Class F insulation system



Blade accessory options:

Break Away Fitting (BAF)

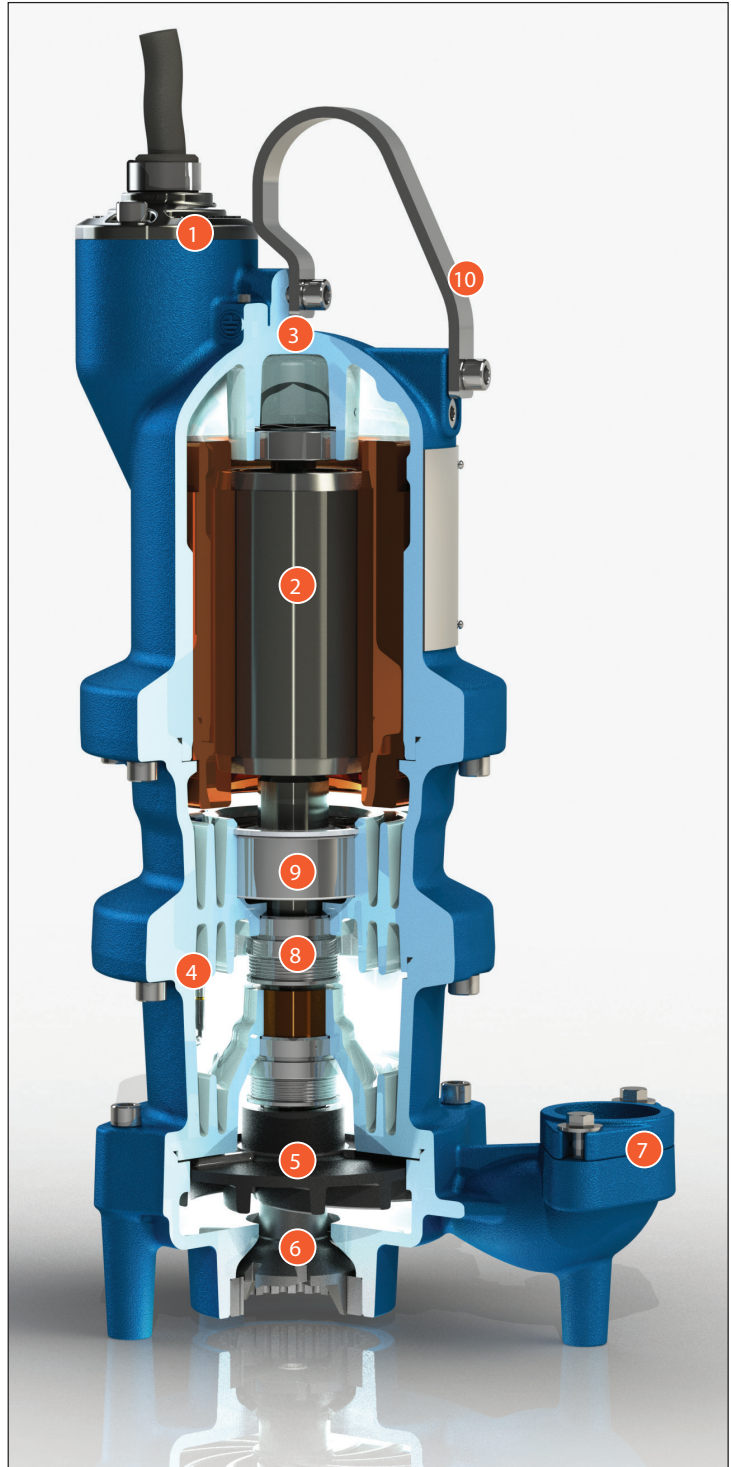
Vertical - used with current grinders/sewage ejectors
Horizontal - BAF-3x3

Stealth™ Control Panels

Family of Stealth Control Panels provides cost effective and reliable pump station operation.

Level Control Systems

Modularized control assemblies are available including mechanical floats and the ESPS™ (Environmentally Sealed Pressure Switch).



brands you trust.

BARNES® burks® CROWN DEMING® PROSSER® WEINMAN®

Crane Pumps & Systems

420 Third Street, Piqua, Ohio 45356
(937) 778-8947 • Fax (937) 773-7157
www.cranepumps.com

Crane Pumps & Systems Canada

83 West Drive, Brampton, Ont. Canada L6T 2J6
(905) 457-6223 • Fax (905) 457-6223

CRANE
A Crane Co. Company

PUMPS & SYSTEMS



BLADE

BY BARNES®

| FEATURES | BLADE XGV | BLADE XGVHH |
|-----------------------|----------------------------------------------------|----------------------------------------------------|
| Discharge (in.) | 2" NPT; 2", 2.5", 3" Flange | 2.5", 3" Flange |
| Shutoff Head (Ft.) | 160 | 242 |
| Maximum Flow (gpm) | 110 | 155 |
| HP Range | 3HP to 7.5HP | 7.5HP to 15HP |
| Voltage | 230/460/575 | 230/460/575 |
| Speed (RPM) | 3450 | 3450 |
| Motor Fill | Oil | Oil |
| Motor Insulation | Class H Varnish | Class H Varnish |
| Shaft Material | 416 Stainless Steel | 416 Stainless Steel |
| Impeller Material | ASTM A-48 Cast Iron | ASTM A-48 Cast Iron |
| Mechanical Seal | Tandem Carbon/ Ceramic | Tandem Carbon/ Ceramic |
| Cutter Mechanism | Exclusive Slicerator Radial Cutter | Exclusive Slicerator Radial Cutter |
| Cutter Material | Hardened 440C Stainless Steel Rockwell C-55 | Hardened 440C Stainless Steel Rockwell C-55 |
| Cord | Plug-n-Play Quick Connect | Plug-n-Play Quick Connect |
| Upper Bearing | Single Row Ball | Single Row Ball |
| Lower Bearing | Double Row Ball | Double Row Ball |
| Sensors | Moisture & Temperature Integral With Power Cord | Moisture & Temperature Integral With Power Cord |
| Check Valve | Optional (Vertical discharge only) | N/A |
| Leg Kit or Pump Stand | Optional | Optional |
| Weight (lb.) | 204 | 305 |
| Warranty | 24 months from date of manufacture | 24 months from date of manufacture |





THE NEXT GENERATION OF GRINDER IS HERE

BLADE

BY BARNES®

CRANE

PUMPS & SYSTEMS

