

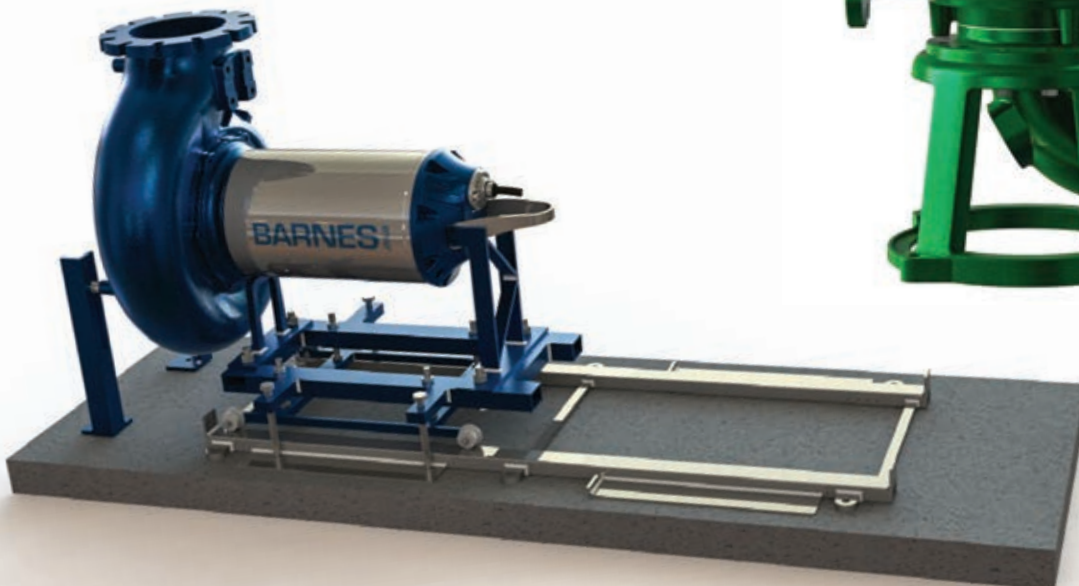
# envie<sup>3</sup>

## VERSATILITY MEETS HIGH PERFORMANCE

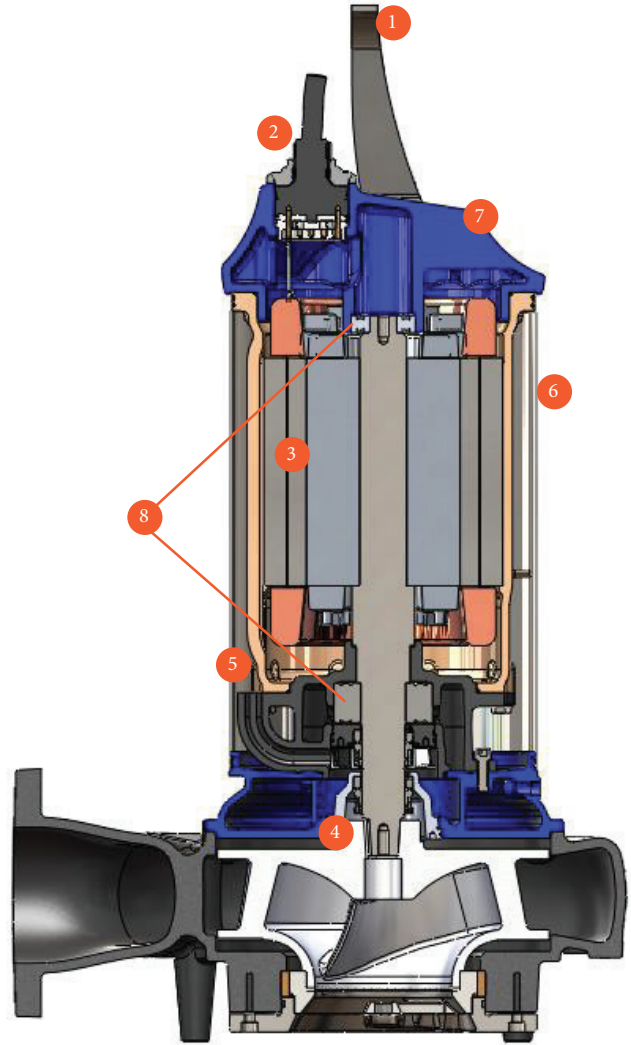
Envie<sup>3</sup> high efficiency air-filled motors come without application limitations. Designed to run both submerged and dry run, these motors are available with our Barnes and Deming chopper and non-clog pumps.

### FEATURES AND BENEFITS

- Patent pending, **closed loop glycol cooling system** that keeps motors stress-free, even in the most demanding applications
- **Premium efficient IE3 motor** that delivers significant energy savings versus traditional motor offerings
- **Available for both non-clog and chopper pumps;** one of the market's most flexible solutions
- **Made in the USA** with best in class manufacturing lead times
- Available in **both vertical and horizontal configurations**, and offered with a variety of user-friendly mounting hardware options
- **Easy to service** with plug & play cord and commercially available mechanical seals and bearing components
- **Rugged and modern design** that looks great out of the box, and for years to come
- **Suitable for shallow wells, high water tables, and rocky terrain**



- 1 Large Stainless Steel Handle
- 2 Plug & Play Quick Connect Cord
- 3 IE3 Premium Efficient Motor /VFD Ready
- 4 Tapered Keyed Shaft
- 5 Closed Loop Cooling System
- 6 Stainless Steel Outer Shell / Stainless Steel Hardware
- 7 Resicoat R4 Powder Coating
- 8 High Capacity Sealed Bearings



## APPLICATIONS



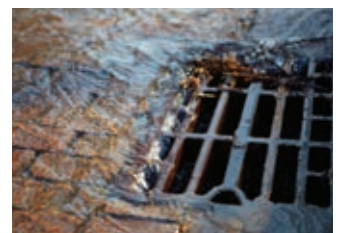
MUNICIPAL



COMMERCIAL



INDUSTRIAL



STORM RUN-OFF

...AND MANY MORE

**BARNES®**

**DEMING®**

**CRANE**  
PUMPS & SYSTEMS